

Hampshire Water Transfer and Water Recycling Project Environmental Statement - Figure 17.3 Social infrastructure and Public Rights of Way

VOLUME NUMBER: 6

PLANNING INSPECTORATE SCHEME NUMBER: WA010002

APPLICATION DOCUMENT REFERENCE: 6.3

APFP REGULATION: 5(2)(a)

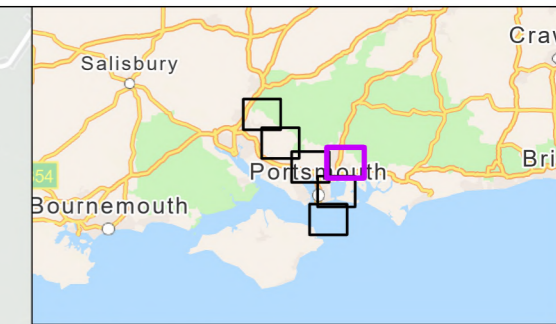
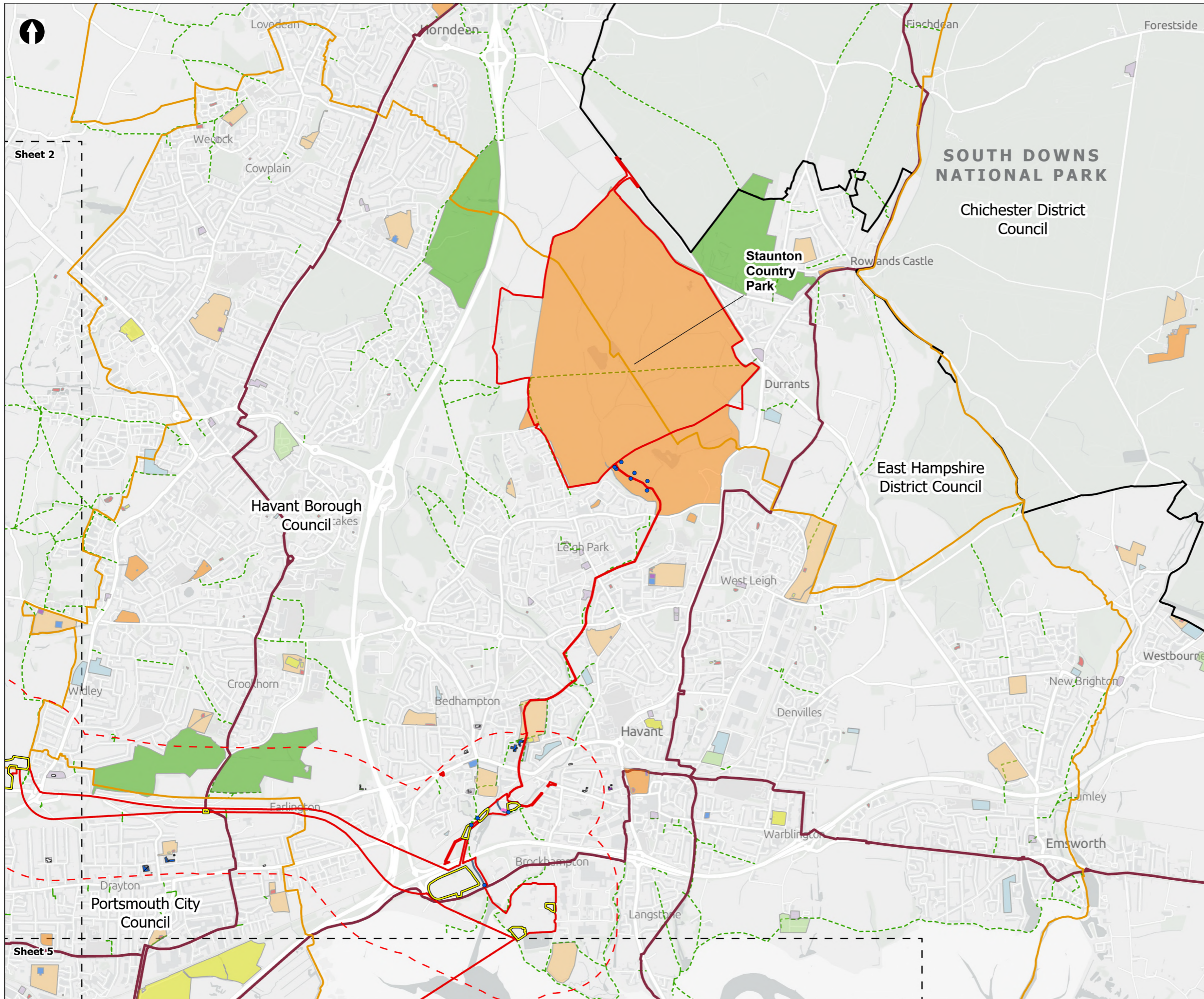
May 2026

Version 0



from
**Southern
Water** 

The Southern Water logo consists of the words 'Southern' and 'Water' stacked vertically in a dark blue, sans-serif font. To the right of the word 'Water' is a graphic element consisting of three stylized, wavy lines in shades of blue, representing water.



- Order Limits
- Socio-economics, Tourism and Health 500m study area
- Sheet Extent Boxes 1:30K
- National Parks
- Local planning authorities
- Construction compounds
- National Cycle Network
- PRoW**
- Existing Public Rights of Way (PRoW)
- Short-term Closure
- PRoW Diversions
- PRoW Management Start/Finish
- OS Important Buildings (social infrastructure)**
- Education
- Emergency Service
- Medical Care
- Religious Buildings
- OS Greenspace (recreation)**
- Allotments Or Community Growing Spaces
- Bowling Green
- Cemetery
- Golf Course
- Other Sports Facility
- Play Space
- Playing Field
- Religious Grounds
- Tennis Court

Coordinate system: British National Grid; Datum: OSGB 1936
 Data sources: © Crown copyright and database rights 2026 Ordnance Survey 0100031673. Sources: Esri, TomTom, Garmin, FAO, NOAA, USGS, © OpenStreetMap contributors, and the GIS User Community, Contains OS data © Crown Copyright and database right 2025. Contains data from OS Zoomstack

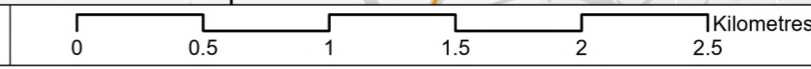
PROJECT TITLE
 Hampshire Water Transfer and Water Recycling Project

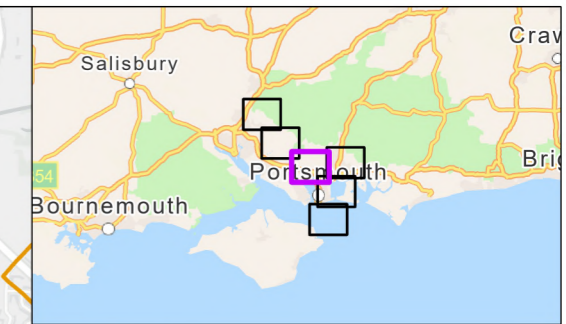
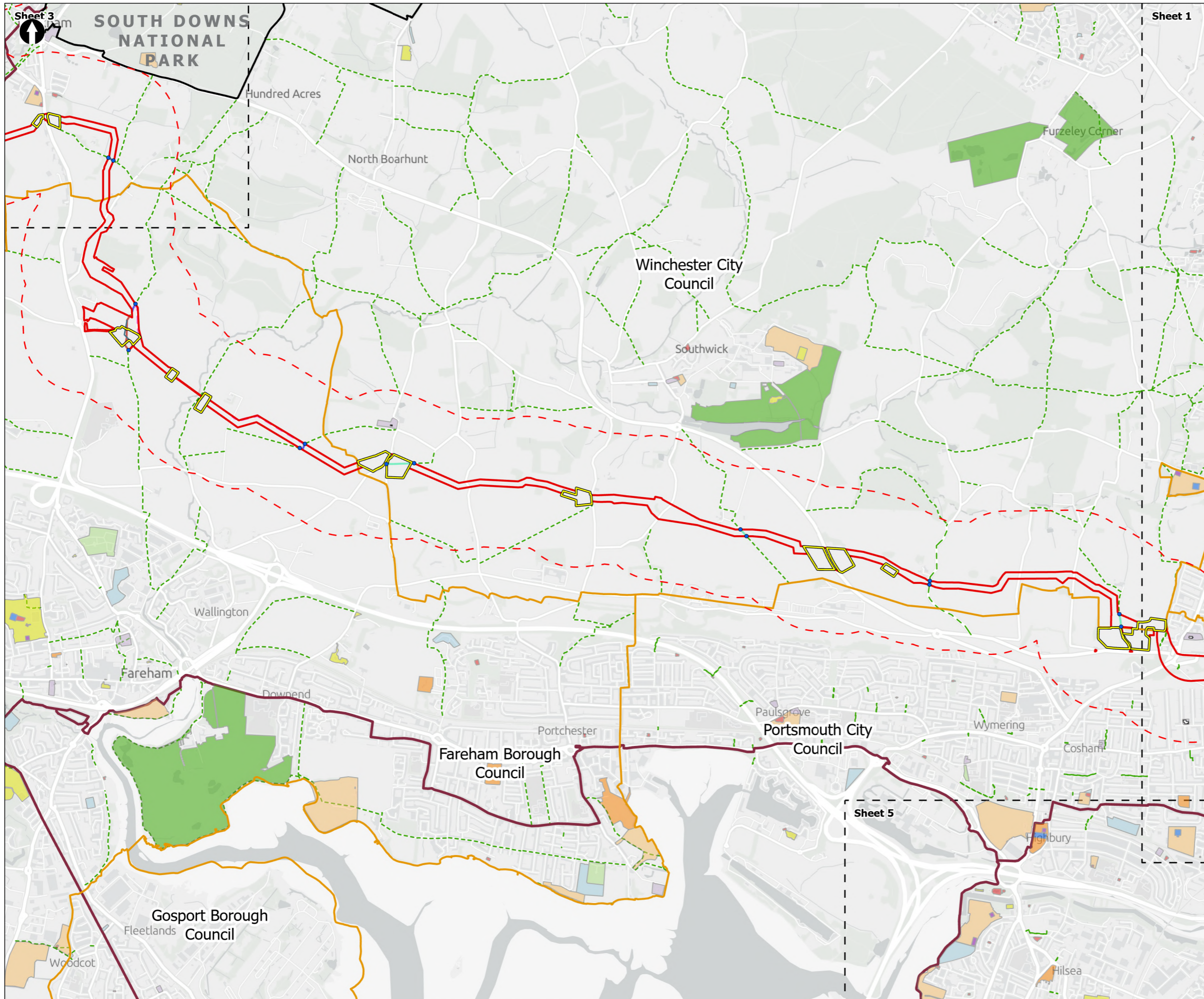


Figure 17.3
 Social infrastructure and Public Rights of Way
 Sheet 1 of 6

Drawn DL	GIS Checked MW	Checked MP	Approved AK
Scale at A3 1:30,000	Status Final	Revision 05	Security STD

Drawing Number
PC5223-RHD-ES-ZZ-D-Z-0079





- Order Limits
- - - Socio-economics, Tourism and Health 500m study area
- Sheet Extent Boxes 1:30K
- National Parks
- Local planning authorities
- Construction compounds
- - - National Trail
- National Cycle Network
- PRoW**
- - - Existing Public Rights of Way (PRoW)
- Temporary Closure
- Temporary Closure and Diversion
- Permanent Closure
- Short-term Closure
- PRoW Permanent Diversion
- PRoW Diversions
- PRoW Management Start/Finish
- OS Important Buildings (social infrastructure)**
- Religious Buildings
- OS Greenspace (recreation)**
- Allotments Or Community Growing Spaces
- Bowling Green
- Cemetery
- Golf Course
- Other Sports Facility
- Play Space
- Playing Field
- Public Park Or Garden
- Religious Grounds
- Tennis Court

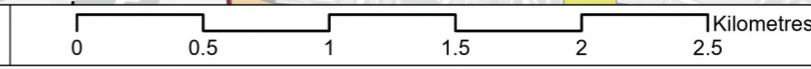
Coordinate system: British National Grid; Datum: OSGB 1936
 Data sources: © Crown copyright and database rights 2026 Ordnance Survey 0100031673. Sources: Esri, TomTom, Garmin, FAO, NOAA, USGS, © OpenStreetMap contributors, and the GIS User Community, Contains OS data © Crown Copyright and database right 2025. Contains data from OS Zoomstack

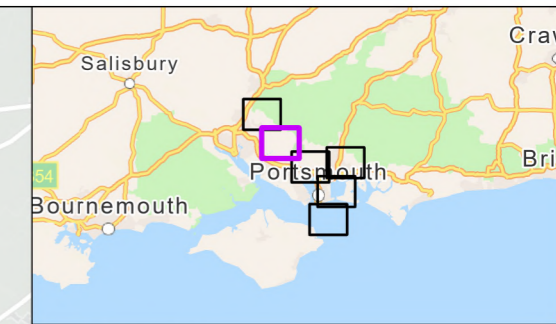
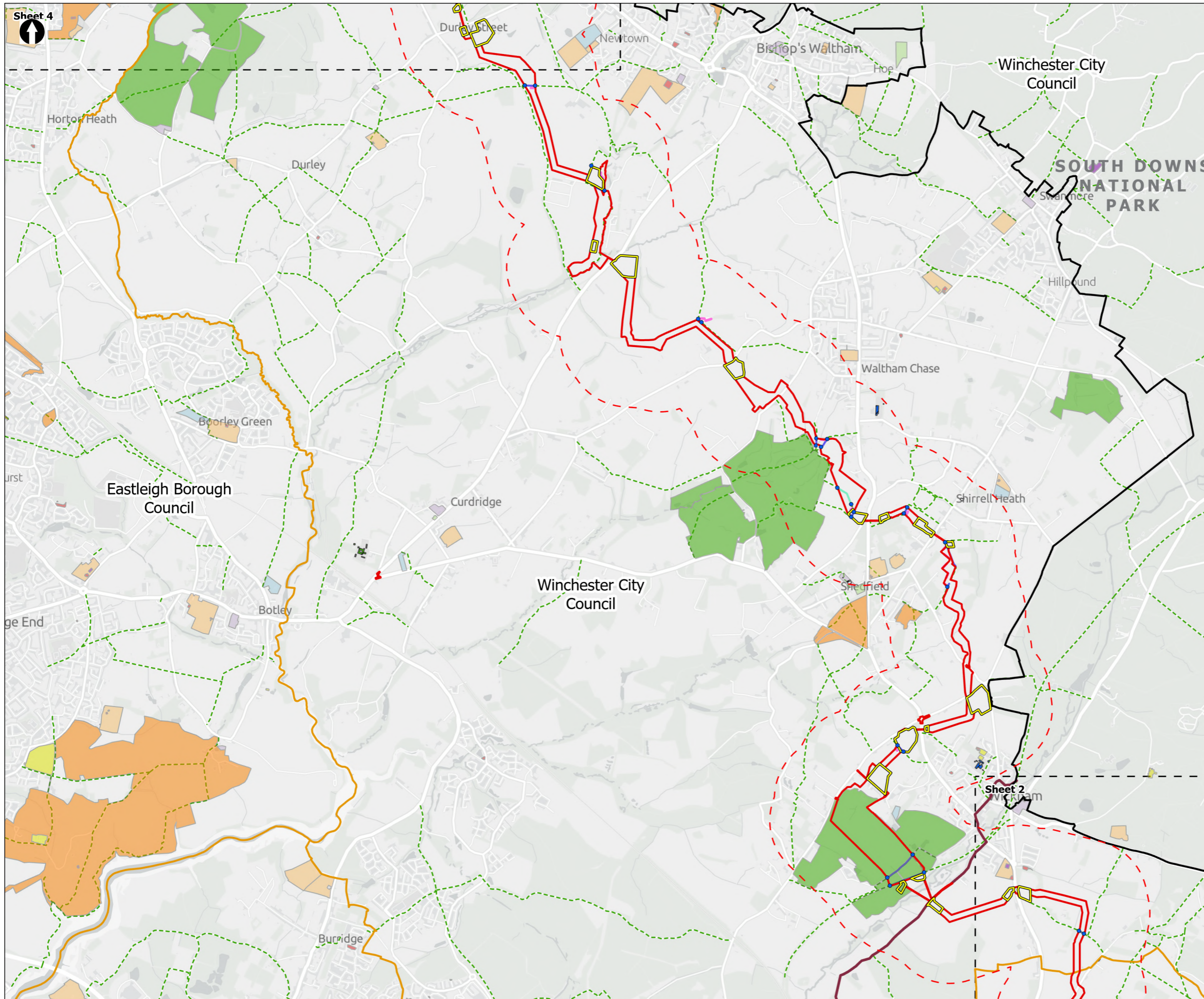
PROJECT TITLE
 Hampshire Water Transfer and Water Recycling Project



Figure 17.3
 Social infrastructure and Public Rights of Way
 Sheet 2 of 6

Drawn DL	GIS Checked MW	Checked MP	Approved AK
Scale at A3 1:30,000	Status Final	Revision 05	Security STD





- Order Limits
- Socio-economics, Tourism and Health 500m study area
- Sheet Extent Boxes 1:30K
- National Parks
- Local planning authorities
- Construction compounds
- National Cycle Network
- PRoW**
- Existing Public Rights of Way (PRoW)
- Temporary Closure
- Temporary Closure and Diversion
- Short-term Closure
- PRoW Diversions
- PRoW Management Start/Finish
- OS Important Buildings (social infrastructure)**
- Education
- Medical Care
- Religious Buildings
- OS Greenspace (recreation)**
- Allotments Or Community Growing Spaces
- Bowling Green
- Cemetery
- Golf Course
- Other Sports Facility
- Play Space
- Playing Field
- Religious Grounds
- Tennis Court

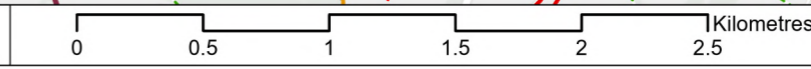
Coordinate system: British National Grid; Datum: OSGB 1936
 Data sources: © Crown copyright and database rights 2026 Ordnance Survey 0100031673. Sources: Esri, TomTom, Garmin, FAO, NOAA, USGS, © OpenStreetMap contributors, and the GIS User Community, Contains OS data © Crown Copyright and database right 2025. Contains data from OS Zoomstack

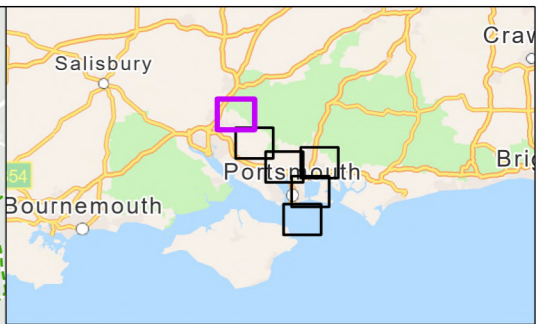
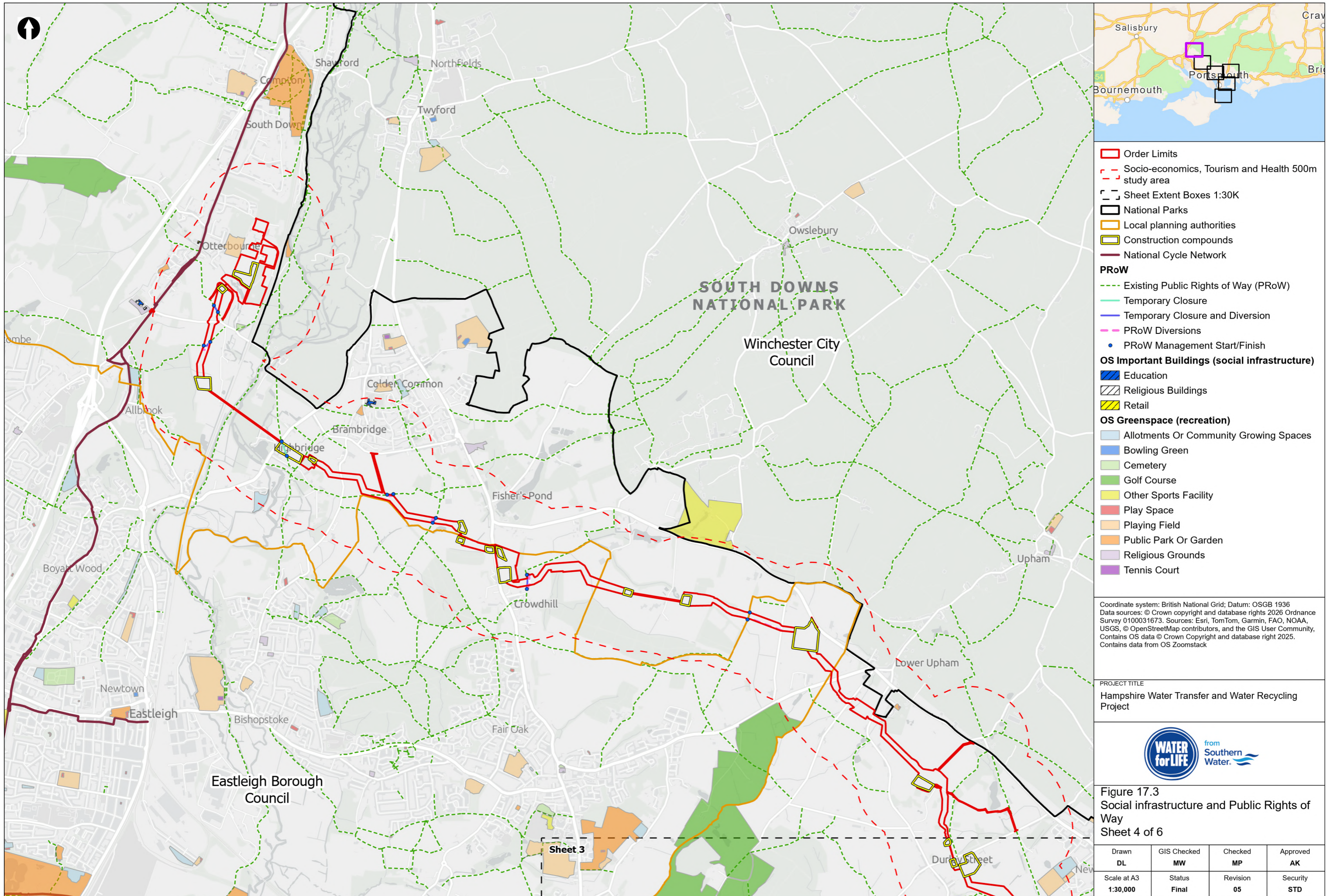
PROJECT TITLE
 Hampshire Water Transfer and Water Recycling Project



Figure 17.3
 Social infrastructure and Public Rights of Way
 Sheet 3 of 6

Drawn DL	GIS Checked MW	Checked MP	Approved AK
Scale at A3 1:30,000	Status Final	Revision 05	Security STD





- Order Limits
- Socio-economics, Tourism and Health 500m study area
- Sheet Extent Boxes 1:30K
- National Parks
- Local planning authorities
- Construction compounds
- National Cycle Network
- PRow**
- Existing Public Rights of Way (PRow)
- Temporary Closure
- Temporary Closure and Diversion
- PRow Diversions
- PRow Management Start/Finish
- OS Important Buildings (social infrastructure)**
- Education
- Religious Buildings
- Retail
- OS Greenspace (recreation)**
- Allotments Or Community Growing Spaces
- Bowling Green
- Cemetery
- Golf Course
- Other Sports Facility
- Play Space
- Playing Field
- Religious Grounds
- Tennis Court

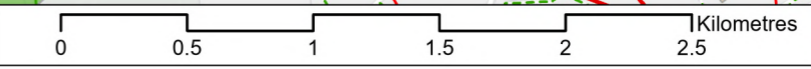
Coordinate system: British National Grid; Datum: OSGB 1936
 Data sources: © Crown copyright and database rights 2026 Ordnance Survey 0100031673. Sources: Esri, TomTom, Garmin, FAO, NOAA, USGS, © OpenStreetMap contributors, and the GIS User Community, Contains OS data © Crown Copyright and database right 2025. Contains data from OS Zoomstack

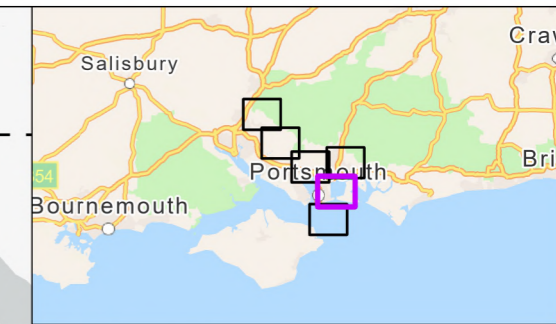
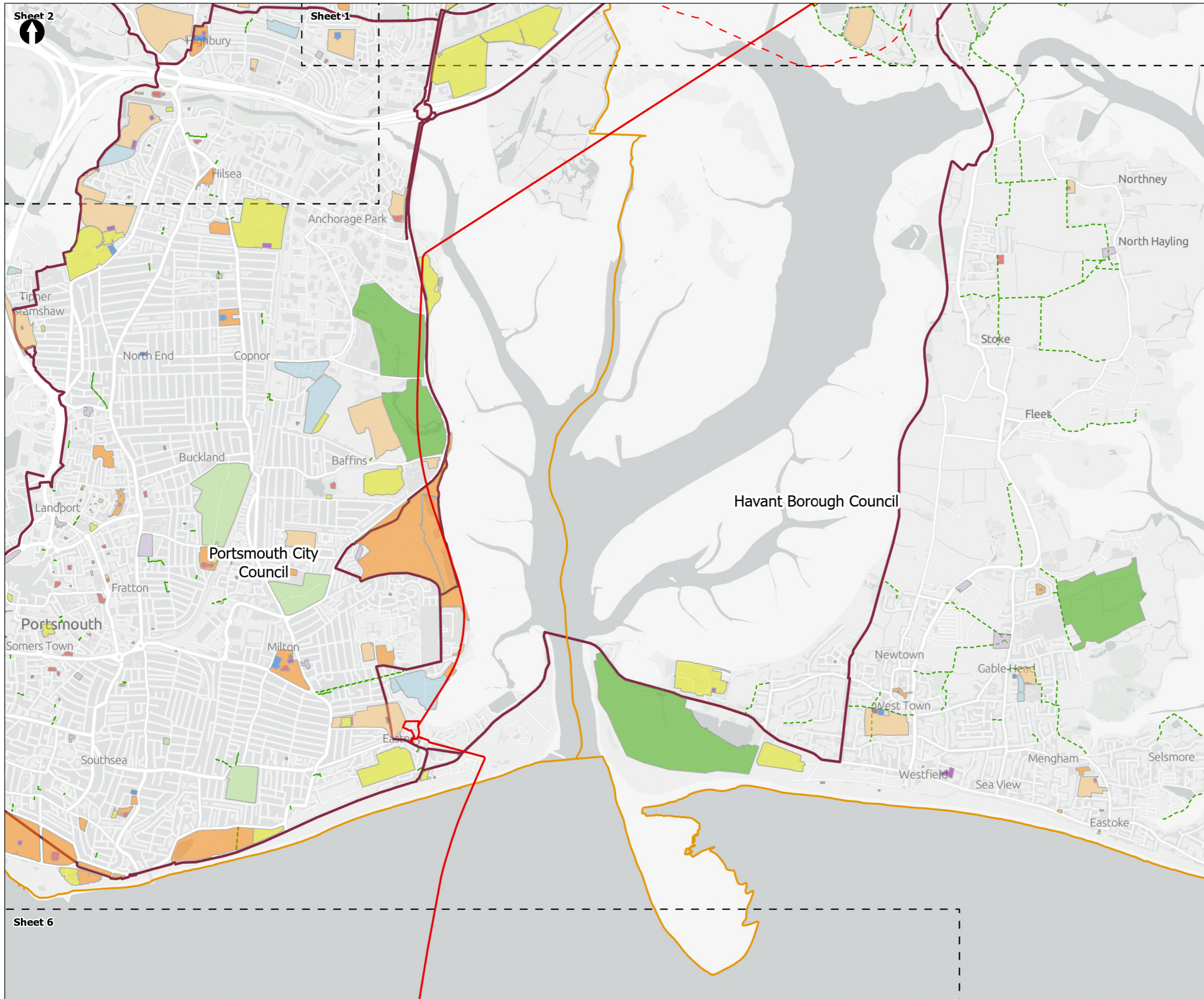
PROJECT TITLE
 Hampshire Water Transfer and Water Recycling Project



Figure 17.3
 Social infrastructure and Public Rights of Way
 Sheet 4 of 6

Drawn DL	GIS Checked MW	Checked MP	Approved AK
Scale at A3 1:30,000	Status Final	Revision 05	Security STD





- Order Limits
- Socio-economics, Tourism and Health 500m study area
- Sheet Extent Boxes 1:30K
- Local planning authorities
- Construction compounds
- National Cycle Network
- PRoW**
- Existing Public Rights of Way (PRoW)
- OS Greenspace (recreation)**
- Allotments Or Community Growing Spaces
- Bowling Green
- Cemetery
- Golf Course
- Other Sports Facility
- Play Space
- Playing Field
- Public Park Or Garden
- Religious Grounds
- Tennis Court

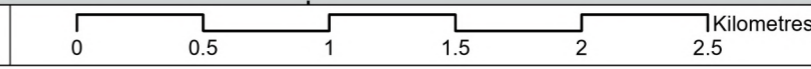
Coordinate system: British National Grid; Datum: OSGB 1936
 Data sources: © Crown copyright and database rights 2026 Ordnance Survey 0100031673. Sources: Esri, TomTom, Garmin, FAO, NOAA, USGS, © OpenStreetMap contributors, and the GIS User Community, Contains OS data © Crown Copyright and database right 2025. Contains data from OS Zoomstack

PROJECT TITLE
 Hampshire Water Transfer and Water Recycling Project



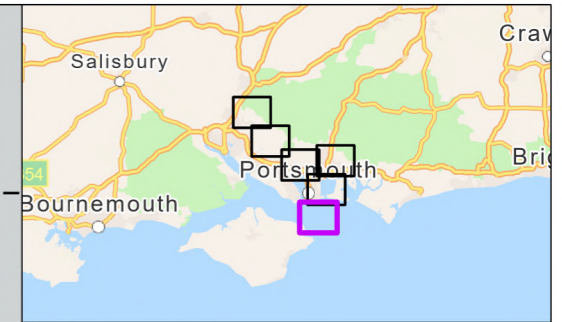
Figure 17.3
 Social infrastructure and Public Rights of Way
 Sheet 5 of 6

Drawn DL	GIS Checked MW	Checked MP	Approved AK
Scale at A3 1:30,000	Status Final	Revision 05	Security STD





Sheet 5



- Order Limits
- Sheet Extent Boxes 1:30K
- Local planning authorities
- OS Greenspace (recreation)**
- Allotments Or Community Growing Spaces
- Golf Course
- Other Sports Facility
- Play Space
- Playing Field
- Public Park Or Garden
- Religious Grounds
- Tennis Court

Coordinate system: British National Grid; Datum: OSGB 1936
 Data sources: © Crown copyright and database rights 2026 Ordnance Survey 0100031673. Sources: Esri, TomTom, Garmin, FAO, NOAA, USGS, © OpenStreetMap contributors, and the GIS User Community, Contains OS data © Crown Copyright and database right 2025. Contains data from OS Zoomstack

PROJECT TITLE
 Hampshire Water Transfer and Water Recycling Project



Figure 17.3
 Social infrastructure and Public Rights of Way
 Sheet 6 of 6

Drawn DL	GIS Checked MW	Checked MP	Approved AK
Scale at A3 1:30,000	Status Final	Revision 05	Security STD

Drawing Number
PC5223-RHD-ES-ZZ-D-Z-0079

